

POLYLOKTM Inc.

Innovations in Precast, Drainage
& Wastewater Products



Zabel®
A Division of Polylok Inc.



PRECAST PRODUCTS CATALOG

POLYLOK PRECAST PRODUCTS

Rebar Spacers



Push-On Rebar Wheel Chairs

Our push-on rebar wheel chairs can handle any load! Be confident knowing that your rebar will stay where you place it. Polylok's push-on rebar wheels can be used for all concrete work including precast, utility vaults, slabs, barriers, foundation work and bridges.

Part Numbers:

- 3053 (7/8")
- 3052 (1")
- 3052-LC (1" Large Channel)
- 30542 (1 1/2")
- 30552 (2")
- 30562 (3")



Locking Rebar Wheel Chairs

We offer the only wheel chair that locks in place and accommodates multiple sized bar.

Part Numbers:

- 3052-LOK (1")
- 30541 (1 1/2")
- 30551 (2")
- 3056 (3")



Viper-Lok™

The Polylok VIPER-LOK™ is the only product on the market that allows for various size pieces of rebar to be connected together vertically and horizontally.

Part Numbers:

- 3070 (Flat)
- 3070-1 (1")
- 3070-15 (1 1/2")
- 3070-2 (2")



Round Base Rebar Chairs

Polylok's round base rebar chairs allow for multiple heights: 1 1/2", 2", 2 1/2", 3", 3 1/2", and 4" heights. They come with a built in sand pad. Their unique design, with open top, allows for easy rebar tying. Their wide base bottom provides maximum stability. Accepts wire through #8 Bar.

Part Numbers:

- 3059-RC1 (1 1/2" - 2")
- 3059-RC2 (2 1/2" - 3")
- 3059-RC3 (3 1/2" - 4")



Stackable Rebar Slab Bolsters

Polylok's plastic bolsters allow you more flexibility when stacking rebar. Our bolsters are available in 20" and 44" lengths and can easily be fastened together for longer spans. Unlike other plastic bolsters, Polylok's bolsters can be stacked into a multi-level configuration, meeting specific height requirements.

Part Numbers:

20" BOLSTERS

- 3063-S1 (1")
- 3063-S15 (1 1/2")
- 3063-S25 (2 1/2")
- 3063-S3 (3")

44" BOLSTERS

- 3063-L75 (3/4")
- 3063-L1 (1")
- 3063-L125 (1 1/4")
- 3063-L15 (1 1/2")
- 3063-L175 (1 3/4")
- 3063-L2 (2")
- 3063-L225 (2 1/4")
- 3063-L25 (2 1/2")
- 3063-L275 (2 3/4")
- 3063-L3 (3")

20" discontinued,
call for availability



Stackable Rebar Chairs

Our stackable rebar chairs are the most versatile chairs on the market. Each chair can either start at a height of 1 1/2" or 2". After your first spacers are laid down you can stack each additional chair at 1/2" increments. It also accepts #3 to #8 rebar for additional flexibility.

Polylok's sand pads are designed to work with our stackable rebar chairs. Its wide based design easily attaches to Polylok's stackable rebar chairs. Ideal for construction sites, flat work and radiant floors.

Part Numbers:

- 3058-SC (1 1/2" - 2")
- 3059-SC (2 1/2" - 3")
- 3058-SP (Sand Pad)



Mesh Chairs

Mesh chairs are an economical chair with a base to hold wire up to #3 bar.

Part Numbers:

- 3060-TMC100 (1")
- 3060-TMC150 (1.5")
- 3060-TMC200 (2")
- 3060-TMC300 (3")

POLYLOK PRECAST PRODUCTS

Rebar Spacers & Concrete Accessories



Rebar End Spacers

Polylok's rebar end spacer is a perfect fit for your rebar. The longer base area ensures better stability. The tip is also designed to give you better concrete flow, and to prevent breakouts. They hold a 1" spacing from tip to bottom of rod.

Part Numbers:

- 30245



Beam Bolster Uppers

Polylok's beam bolster uppers are used for supporting one layer of steel above another, and spacing them to required distances. May be used on soft material or fill. Our beam bolster uppers are available in 44" lengths and can be easily fastened together for longer spans.

Part Numbers:

- 3062-1 (1")
- 3062-15 (1.5")
- 3062-2 (2")
- 3062-25 (2.5")
- 3062-3 (3")

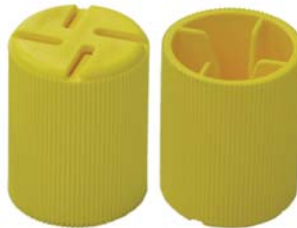


Corner Guard

The corner guard is Polylok's innovative product for securing precast products for safe delivery to the site. Its features make it the most versatile corner guard ever built!

Part Numbers:

- 3066



30245-F (Scratch Cap)

Rebar Scratch Cap / Rebar Safety Cap / OSHA Rebar Safety Cap

Polylok's rebar safety caps provide the protection you need from protruding rebar at your construction or precast sites. They can be used to protect employees and equipment from exposed rebar, pipe, and anchor bolts.

Rebar Scratch Caps are brilliant yellow for excellent visibility. These caps are meant for modest protection and do not prevent impalement. Rebar scratch caps fit #3 - #8 rebar.

Rebar Protective Caps are high-quality and are brilliant orange for excellent visibility. These caps provide greater protection than our rebar scratch caps, but are not intended to prevent impalement. Rebar safety caps fit #3 - #8 rebar.

OSHA Rebar Safety Caps are safety orange color and are of use where the danger of impalement is present. OSHA rebar safety caps fit #3 - #8 rebar and #9 - #18 rebar.



3024 (Protective Cap)



3024-OSC-SG (#3 - #8 OSHA Cap)
3024-OSC-SG2 (#9 - #18 OSHA Cap)



Threaded Zinc Inserts

Polylok's threaded inserts are precision die-cast of zinc alloy with excellent resistance to atmospheric conditions. These inserts are specifically suited for use in precast concrete elements and can be quickly and easily secured to the form. Polylok inserts are used for securing machinery and equipment, for suspending piping and supporting railing/poles.

Part Numbers:

- 30383-15T (1/4 x 1 1/4")
- 30381-24T (3/8 x 1")
- 3038-25T (3/8 x 1 3/8")
- 30381-25T-OB (3/8 x 1 3/8" open bottom)
- 30380-35T (1/2 x 1 1/2")
- 30380-36T (1/2 x 2 7/8")
- 30382-45T (5/8 x 1 11/16")
- 30382-46T (5/8 x 2 7/8")
- 30384-55T (3/4 x 1 11/16")
- 30384-56T (3/4 x 3")



Threaded Insert Locators

Threaded insert locators are available in five sizes! Polylok's threaded insert locator revolutionizes the installation of all plastic and metal inserts. Our inserts shear off when the casting is stripped, never leaving an exposed hole or exposed threads. Just tap the insert into the insert, then tap the insert into the pre-drilled 3/8" hole and that's it! The hole will self seal allowing you to drill as many holes as needed without compromising form integrity.

Part Numbers:

- 30383 (1/4")
- 30381 (3/8")
- 3038 (1/2")
- 30382 (5/8")
- 30384 (3/4")

POLYLOK PRECAST PRODUCTS

Concrete Accessories



Cable Lift Loops

Polylok's cast-in lift loops offer a secure way to lift precast products. Our lift loops are manufactured in the USA of galvanized wire rope. We offer 5 different tension capacities to meet your lifting requirements.

Part Numbers:

- 3200-LL.8T (.8 Ton)
- 3205-LL1.2T (1.2 Ton)
- 3210-LL1.6T (1.6 Ton)
- 3215-LL2.5T (2.5 Ton)
- 3220-LL3.8T (3.8 Ton)



Shims

Polylok shims are made of engineered plastic specifically formulated for use by the precast industry. This material provides optimum performance for applications where high compressive strength and load bearing are important. Available in: 1/16", 1/8", 3/16", 3/8".

Part Numbers:

- 3065-SH116 (1/16")
- 3065-SH118 (1/8")
- 3065-SH316 (3/16")
- 3065-SH318 (3/8")



Form Hammer

Designed in our precast plants, this aluminum hammer will not damage your forms. The aluminum is designed to absorb the energy, leaving your forms intact.

Part Numbers:

- 3100



Clamps, Hinges and Posts

Polylok's heavy-duty hinges and clamps are ideal for the precaster who manufactures his/her own forms or repairs existing forms. Rugged and economical.

Part Numbers:

- 3041 (6" D-Box Clamp)
- 3041-U (U-Clamp for D-Box)
- 3042 (15" Bent Arm Form Clamp)
- 3042-10 (10" Bent Arm Form Clamp)
- 3042-10S (10" Straight Arm Form Clamp)
- 3042-E (Eyebolt for 15" Form Clamp)
- 3042-E10 (Eyebolt for 10" Form Clamp)
- 3042-HD (22" Bent Arm Heavy Duty Form Clamp)
- 3042-S (15" Straight Arm Form Clamp)
- 3043 (Post for Large Form Clamp)
- 3045 (10" D-Box Hinge)



Forms

Let Polylok help you increase profits and gain customers. Polylok's forms are designed for precasters and are an economical way to expand your precast product line.

Part Numbers:

- 3028 (Dipper Mold - Steel)
- 3030 (Custom D-Box Mold)
- 3031 (Mold Cover - Steel)
- 3032 (Steel Rain Drain Mold)
- 3032-1 (Sump Drain Mold -Steel)
- 3032-2 (2 Gang Rain Drain Mold - Steel)
- 3033 (Lifting Device for Concrete D-Boxes)
- 3037-2 (13" x13" Sump Form)



Butyl Sealants

Polylok's butyl joint sealant remains flexible and forms a permanent bond to a wide variety of substrates including concrete, metals and plastics. Adhesion and cohesion at the time of installation are excellent, and improve after the joint has been formed and placed in service. This sealant is designed not to shrink, oxidize or harden, and has excellent resistance to temperature extremes, acid and alkaline environments.

Part Numbers:

- 3110 (Custom sizes available)
- 3110-1 (1/2" x 21')
- 3110-2 (3/4" x 21')
- 3110-3 (1" x 21')
- 3110-4 (3/4" x 14.6')
- 3110-5 (1" x 14.6')



Poly-Lube

Polylok's industrial lubricant (Poly-Lube) is manufactured using non-toxic, renewable raw materials so they are environmentally safe and biodegradable. In addition to Poly-Lube's environmental benefits, Polylok lubricants are safe for use with all metals without fear of discoloration or damage.

Part Numbers:

- 3095 (5 gallon)
- 3095-55 (55 gallon drum)

PRECAST PRODUCTS

POLYLOK PRECAST PRODUCTS

Concrete Accessories



Mold Fastening Nails

Our mold fastening nails allow you to simply anchor mold attachments quickly and for less cost than older, time consuming methods. Quickly attach accessories to your mold such as: pulling irons, block-outs, unistrut clips, hole formers and lighting panel couplings. The hole will self seal allowing you to drill as many holes as needed without compromising the form integrity.

Part Numbers:

- 30401



Handles & Receivers

The Polylok flush receiver is cast into concrete tanks, and accepts the Polylok handle. The handle then lays flush within the receiver, allowing for tanks to be stacked in the yard. A warning sign that records service records is molded into the receiver.

Part Numbers:

- 3047-REC (Flush Receiver)
- 3551-C (Handles)
- 3047-RH (Red Warning Sign for Handle)



Pocket Formers

Our pocket formers create a void in concrete to form a handle to make it easy for lifting concrete structures. They come in two sizes: 8"x 2 5/8" and 6" x 1/12". They are available in rubber or urethane.

Part Numbers:

- 3019-L (Large)
- 3019-S (Small)
- 3019-SU (Small Urethane)

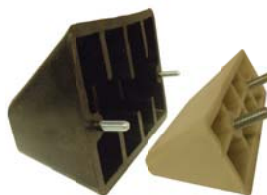


Lift Hole Plugs

Our manhole lift plugs are made of resilient rubber and can be used for sizes between 2.25" – 2.5". Perfect for vacuum testing of manholes, concrete pipe, as well as any concrete structure that is transported using steel lifting pins. Simply hammer the plug into the hole until a snug fit is achieved.

Part Numbers:

- 3046



Equals & Unequals

Equals and unequals are great products for precasters looking to make consistent knockouts in their precast structures. These were originally designed for leaching galleys, but many of our precast customers have used them for other applications.

Part Numbers:

- 3044 (unequal)
- 30441 (equal)



Custom & Standard Signs

We can customize your own warning sign or you can choose from one of our many standard signs. All of our signs are meant to last in toughest of environments. Whatever the sign you are looking for, Polylok has the one for you.

Part Numbers:

- 3047-CUS (Warning Sign)
- 3047-FLT (Outlet Filter Clean As Needed)
- 3047-R (Large Red)
- 3047-Y (Old Style Yellow Warning Sign)
- 30471-C (Custom Signs)
- Call for any custom sign needs



Inspection Tags

Our inspection tags will ensure that your product is inspected for quality, "Pre-Pour and Post-Pour". Simply tear off and product is ready for pouring. When your product leaves your yard with our inspection tag cast in you will be confident knowing it passed all quality specifications.

Part Numbers:

- 3047-S



Bearing Pads / Concrete Panel Spacers

Polylok, Inc. has developed an innovative concrete panel spacers pad that offers many improved features at a lower cost.

Part Numbers:

- 3065



POLYLOK PRECAST PRODUCTS

Seals, Grommets, & Accessories



Poly I Pipe Seal

Part #: 3000



Poly II Pipe Seal

Part #: 3002



Baffle/Filter Ready Seal

Part #: 3020



2" Open End Boot Seal

Part #: 3006-OE



2" Closed End Boot Seal

Part #: 3006-CE



Poly III Closed End Boot Seal

Part #: 3003-B



Poly IV Open End Boot Seal

Part #: 3003-OE



Poly IV Closed End Boot Seal

Part #: 3003-CE



Poly VI Closed End Boot Seal

Part #: 3005-CE



4" D-Box Seal & Nut

Part #: 3001-SN



6" D-Box Seal & Nut

Part #: 3001-6

Part#: 3001-N6



Grommets

Part #: 3007-GM.50 (1/2")

Part #: 3007-GM.75 (3/4")

Part #: 3007-GM1 (1")

Part #: 3007-GM125 (1 1/4")

Part #: 3007-GM150 (1 1/2")

Part #: 3007-GM2 (2")

Part #: 3007-GM3 (3")

Part #: 3007-GM435 (4" SDR35)

Part #: 3007-GM440 (4" SCH40)

Part #: 3007-GM6 (6" SCH40)

Part #: 3007-GM635 (6" SDR35)



Universal Ready Adapter

Part #: 3021 (Poly I or Poly II)

Part #: 3021-3 (Poly III)



Mandrels / Magnetic Mandrels

Many Sizes Available!